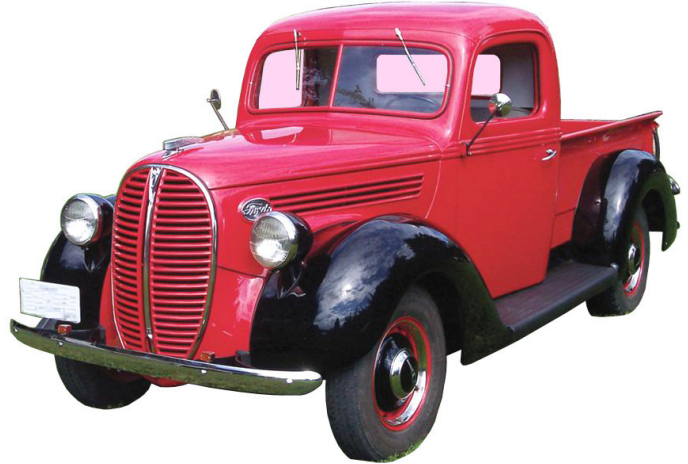


**1938-41 Commercial Grille, Hood,
Fenders and Running Boards, cont**



1938-39 1/2 Ton and Truck Grille

81C-8200	Grille, 1938	not.avbl
91C-8200	Grille, 1939	not.avbl
81C-8213	Grille center V8 emblem, 1938, chrome	105.00 ea
81C-8157	Grille center trim, 1938	not.avbl
91C-8157	Grille center trim, 1939	not.avbl
81C-8184	Grille outer trime ring, 1938-39	not.avbl

1938-39 1/2 Ton and Truck Radiator Shroud

81C-8084/5-B	Radiator side panels	not.avbl
81C-8240-B	Grille inner baffel	not.avbl
81C-16550	Grille to crossmember shield	not.avbl

1938-39 1/2 Ton and Truck Hood

81C-16710-A	Hood top	not.avbl
81C-16618-A	Hood side panel RH	not.avbl
81C-16619-A	Hood side panel LH	not.avbl
81A-16750-RK	Hood side panel mounting studs & brackets	50.00 ea

1938-39 1/2 Ton and Truck Hood Handles & Ornaments

	1938		1939	
Hood Handle	81C-8215-A	not.avbl	91C-8215	not.avbl
Handle Base	81C-8218-A	not.avbl	91C-8218	not.avbl
Base Gasket	81C-8227-A	not.avbl	91C-8227	not.avbl

**1938-39 1/2 Ton and Truck
Hood Emblem**

"Ford 85"

81C-16606 not.avbl



1938-39 1/2 Ton and Truck Hood Latch

81A-16628	Hood latch cam	not.avbl
81A-16650	Hood handle tension spring	not.avbl

1938-39 1/2 Ton and Truck Hood Hinge

Hood Hinge Brackets

81C-16796-S	Plain	not.avbl
81C-16796-SS	Stainless	not.avbl

Hood Hinge Bolts, w/safety wire

91A-16796-HK	Set of 4	7.50 ea
--------------	----------	---------

* Parts with price listed as "not.avbl" are not known to be available at this time, but are listed for reference.

1938-41 Commercial Grille, Hood, Fenders and Running Boards, cont



Hood Support Arms

1938 Prop (ratchet style)

78-16782 Props (ratchet type) not.avbl

1939 Prop (spring arm style)

91A-16782/3 Plain 55.00 pr

91A-16782/3-SS Stainless 90.00 pr

1939 Replacement spring only:

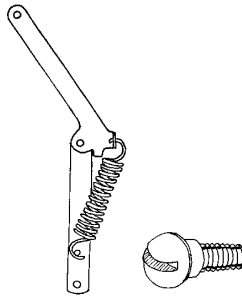
91A-16789 Plain 7.50 ea

91A-16789-SS Stainless 12.50 ea

Hood Support Shoulder Screws

01A-16782-MS Plain 7.50 pr

01A-16782-MSS Stainless 12.50 pr



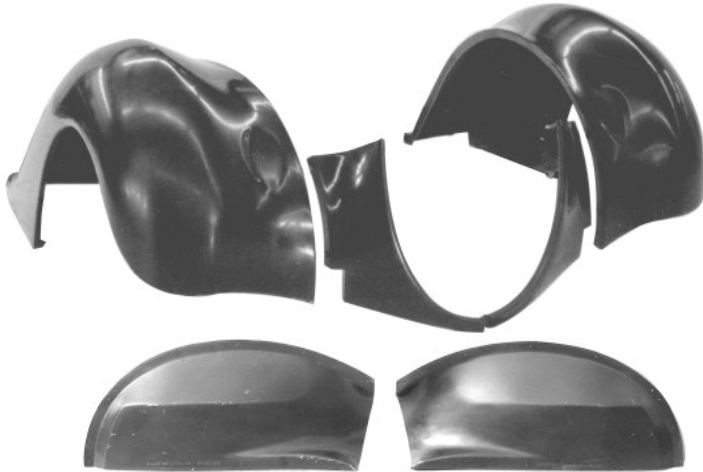
1938-39 1/2 Ton and Truck Hood Lacing & Bumpers

81C-16739-S Hood lacing on grille, Rubber 10.00 ea

78-16740-S Hood lacing on cowl 10.00 ea

81A-16761 Hood rubber bumper set 25.00 set

1938-39 1/2 Ton Pickup & Panel Front Fender, Fiberglass



RFF3839PU RH front, 1938-39 Pickup 625.00 ea

LFF3839PU LH front, 1938-39 Pickup 625.00 ea

RFE3839PU RH fender/grille extension 200.00 ea

LFE3839PU LH fender/grille extension 200.00 ea

RFI3839PU RH Inner front fender 225.00 ea

LFI3839PU LH Inner front fender 225.00 ea

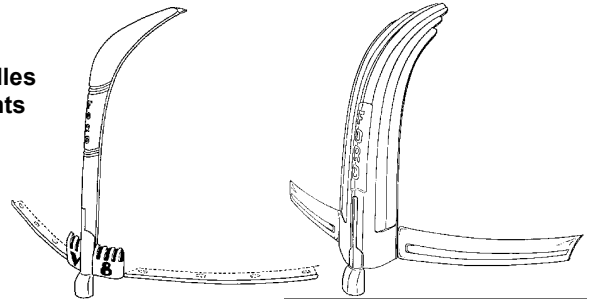
1938-39 1/2 Ton Pickup & Panel Front Fender Brackets

	RH		LH	
Fender/Headlight bkt	81C-16025-R	not.avbl	81C-16025-L	not.avbl
Fender bkt/frame brace	81C-16067-R	not.avbl	81C-16067-L	not.avbl
Fender skirt brace	81C-16094	30.00 ea	81C-16094	30.00 ea

1940-41

1/2 Ton

Hood Handles & Ornaments



01C-8218-A 1940 Hood ornament, chrome 185.00 ea

11C-8218 1941 Hood ornament, chrome not.avbl

91A-8219-S 1940-41 Hood ornament mount spacers (3) 17.50 set

01C-8215 1940 Hood handle, chrome 22.50 ea

11C-8215 1941 Hood handle, chrome not.avbl

91A-2466 1940-41 Handle to Ornament Pin 5.00 ea

01A-8216-S 1940 Hood lower trim, stainless 80.00 pr

11C-8264-S 1941 Hood lower trim, chrome 225.00 pr

01A-16604-S 1940 Hood V & 8 emblems 55.00 pr

1940-41 1/2 Ton Grille

Chrome center & black sides

01A-8200-AS 900.00 ea

Chrome center & sides

01A-8200-AC 1000.00 ea

Lower grille panel, plain

01A-8188-A 120.00 ea

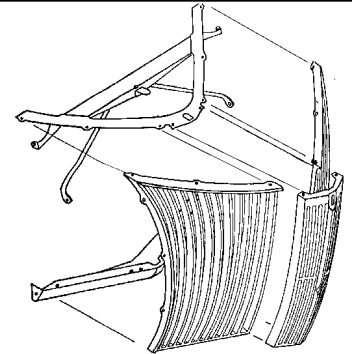
Lower grille panel, plain

01A-8188-C not.avbl

Grille upper brace assembly

Does not fit 1941 6 cylinder

01A-8145-A 150.00 ea



1940-41 1/2 Ton Grille to Radiator Shroud

Side baffle plates

91A-8104-S Steel 32.50 pr

Grille to crossmember shield

FSB3940P Fiberglass 175.00 ea

91A-8240-B Steel 115.00 ea

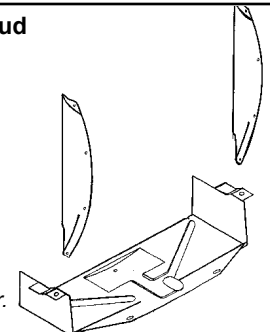
Grille apron to frame bumpers

01A-16188 Set of 4 5.00 set

Grille upper shroud plate (street rod),

Assists cooling, prevents air bypassing radiator.

01A-8327-A Stainless 150.00 ea



* Parts with price listed as "not.avbl" are not known to be available at this time, but are listed for reference.

1938-41 Commercial Grille, Hood, Fenders and Running Boards, cont

**1940-41
1/2 Ton
Hood**



HD4041PU Fiberglass with steel inner structure 1300.00 ea

1940-41 1/2 Ton Hood Center Trim Strip

01C-16736 Center strip, 1940-41, stainless 65.00 ea
91A-20003 Center trim strip mounting clips, 1940-41 5.00 set

1940-41 1/2 Ton Hood Latch Linkage & Safety Catch

01A-16781-S Hood latch linkage spring set (V8-85 only) 10.00 set
01A-16892-A Hood safety catch 55.00 ea
01A-16674-A Hood latch release lever not.avbl
01A-16674-HK Clevis pins & washers for release lever 75.00 ea
01A-16718 Hood latch check on front brace not.avbl
01A-16774-BHK Hood front brace mount hardware 7.50 set

1940-41 Hood Hinges and Supports

Hood Hinges:

99A-16796-S Plain 35.00 pr
99A-16796-SS Stainless 55.00 pr

Hood Hinge Bolts w/safety wire

91A-16796-HK Set of 4 7.50 ea

Hood Support Arms with Springs

Uses shoulder bolt top and bottom

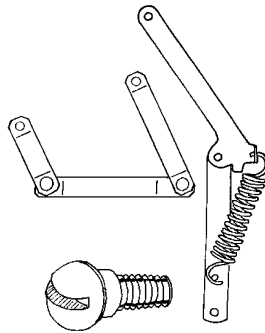
91A-16782/3 Plain 55.00 pr
91A-16782/3-SS Stainless 90.00 pr

Spring only (replacement):

91A-16789 Plain 7.50 ea
91A-16789-SS Stainless 12.50 ea

Hood Support Shoulder Screws

01A-16782-MS Plain 7.50 pr
01A-16782-MSS Stainless 12.50 pr



1940-41 1/2 Ton Hood Lacing & Hood Bumpers

78-16740-S Hood lacing on cowl, rubber 10.00 ea
01C-16761 Hood bumper set 15.00 ea

1940-41 Hood Side "Ford" Emblem

1940 *Ford* 1941



91A-16606 1940 32.50 ea
11C-16606 1941 22.50 ea

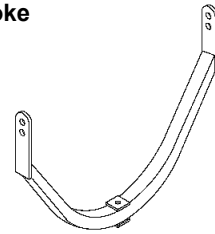
1940-41 1/2 Ton Front Fenders, Fiberglass



RFF4041PU RH Front 625.00 ea
LFF4041PU LH Front 625.00 ea
RFI40A RH inner fender, fiberglass 225.00 ea
LFI40A LH inner fender, fiberglass 225.00 ea
01A-16082/3 Inner fenders, stamped steel 300.00 pr

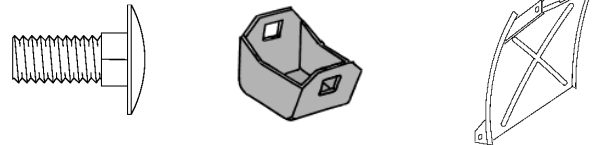
1940-41 1/2 Ton Front Fender Support Yoke

Mounts to front frame crossmember and cross braces inner fenders. Our beefed up Street Rod version is formed of 1" steel tubing with the cross strap left off for extra engine pulley clearance.



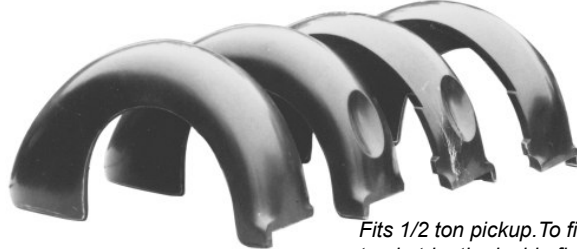
01A-16138-H Yoke 150.00 ea
01A-16138-MB Bolt/Spring 20.00 ea

1940-41 1/2 Ton Front Fender Braces & Special Bolts



91A-16088/9 Behind fender "Baffle" brace, stamped steel 100.00 pr
01C-16094 Fender to firewall brace 40.00 pr
01A-16005-MB Inner fender/fender shallow carriage bolts (8) 10.00 set

1938-41 1/2 Ton Rear Fenders, Fiberglass



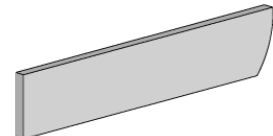
Fits 1/2 ton pickup. To fit the panel truck, trim the inside flange.

RRF3841PU RH: Plain (no tire dimple) 525.00 ea
LRF3841PU LH: Plain (no tire dimple) 525.00 ea
RRF3841PUW RH: w/dimple for spare tire 525.00 ea
LRF3841PUW LH: w/dimple for spare tire 525.00 ea

1/2 Ton Running Board To Bed

Aprons, stamped steel

Mount between box and running boards in front of rear fenders.



81C-16535-S 60.00 pr

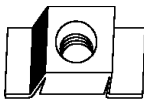
* Parts with price listed as "not.avbl" are not known to be available at this time, but are listed for reference.

1938-41 Commercial Grille, Hood, Fenders and Running Boards, cont

5/16-24 Cage Nuts

Welded to body and frame for
fender and running board mounting.

AH-3145 Cage nut 1.50 ea



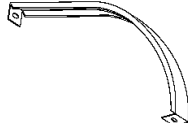
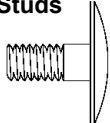
Rear Fender Brackets & Bed Studs

1/2 Ton Rear fender brackets

81C-16391 30.00 ea

Bed Fender Studs, set of 4

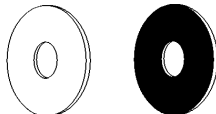
AH-1173 2.50 set



1939-1940 Fender Washer Sets

Rubber washers and large metal washers.

01A-16005-MW Set of 30 each 15.00 set



Fender Welt

Black vinyl, 25 ft. length

48-16070-B 3/16" bead 17.50 ea

48-16070-D 1/4" bead 17.50 ea

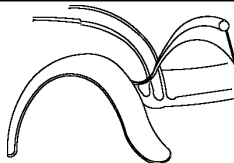
Vinyl, clad w/stainless bead, 8 ft. length

48-16070-SS 7/32" bead 22.50 ea

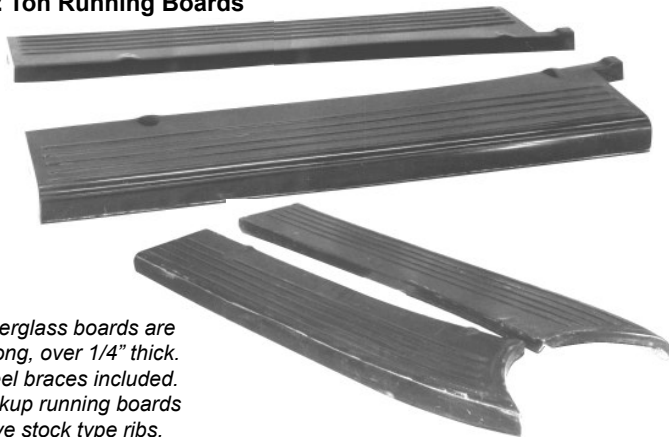
Vinyl, COLORED, Use part suffix to indicate color

Maroon: -MR, Caramel: -CR, Medium Blue: -BLM, Red: -RD, Dark Brown:
-BRD, Dark Green: -GRD, White: -WH, Grey: -GY, Bright Orange: -OR,
Yellow: -YL, Bright Red: -RR

48-16070-xx 25 ft length, Specify Color 40.00 ea



1/2 Ton Running Boards



Fiberglass boards are
strong, over 1/4" thick.

Steel braces included.

Pickup running boards
have stock type ribs.

RRB3839PU 1938-39 RH Running board, fiberglass 200.00 ea

LRB3839PU 1938-39 LH Running board, fiberglass 450.00 ea

81C-16450-S 1938-39 Running Boards, steel not.avbl

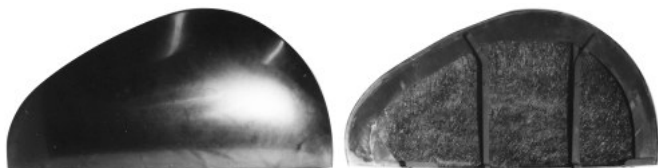
RRB4041PU 1940-41 RH Running board, fiberglass 450.00 ea

LRB4041PU 1940-41 LH Running board, fiberglass 450.00 ea

01C-16450-S 1940-41 Running boards, steel not.avbl

Teardrop Fender Skirts, Fiberglass

Excellent fiberglass reproductions of the aftermarket bubbled fender skirts
that were so popular in the '50's. Includes locking arms to latch to the top
of the fender, clamps to the bottom of the skirts to the front and rear of the
wheel opening, stainless screws, and rubber seals.



FST3740F

Fender Skirts, fiberglass

700.00 pr

* Parts with price listed as "not.avbl" are not known to be available at this time, but are listed for reference.