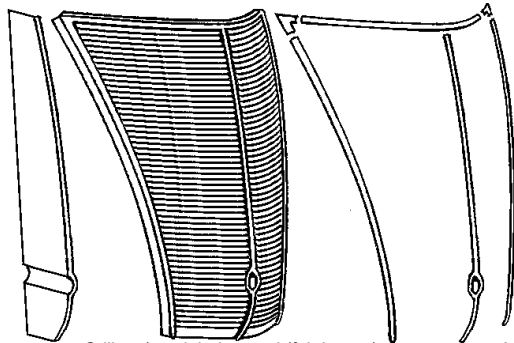


## 1937 Passenger Grille, Hood, Fenders & Running Boards



### Grille



78-8200-P	Grille w/crank hole, steel (fair import)	850.00 ea
78-8200-PN	Grille, no crank hole, steel (fair import)	850.00 ea
<i>Note: imported grilles are fair quality which require some effort for perfect fit. We strongly recommend fitting before painting or plating</i>		
78-8242/3	Grille upper corner brackets (hood side mount)	60.00 pr
78-8209	Grille center vertical brace	105.00 ea
78-8157	Grille trim, center, stainless	30.00 ea
78-8184/5	Grille trim, sides, stainless	80.00 pr
78-8264	Grille trim, top, stainless	32.50 ea
78-8168/9	Grille trim, corners, stainless	25.00 pr

### Grille "Ford V8 85" Emblem

Chrome with blue insert

78-8217 60.00 ea



### Grille Inner Baffle

Fiberglass

GSP37P 175.00 ea



### Grille to Crossmember Shield

Fiberglass

FSB37P 125.00 ea

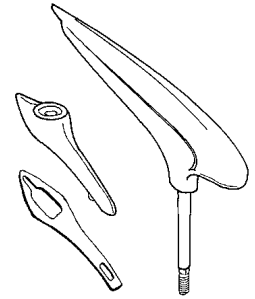


## 1937 Passenger Hood Handles & Ornaments

### Hood handle and base

chrome plated:

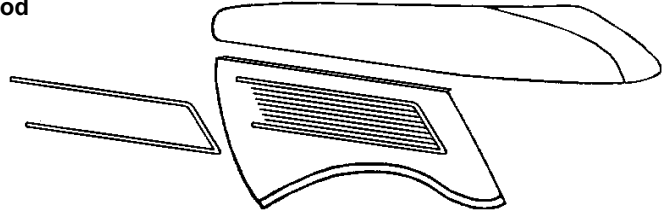
78-8215/18 200.00 ea



### Hood handle base gasket:

78-8227 2.00 ea

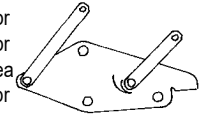
### Hood



78-16710-SM	Hood, steel, smooth (no handle cutout)	725.00 ea
HDS37PSR	Hood side panel RH, smooth, fiberglass	not.avbl
HDS37PSL	Hood side panel LH, smooth, fiberglass	not.avbl
78-16722-S	Hood side trim	not.avbl

### Hood Hinges and Props

78-16796/7	Hinges, plain	70.00 pr
78-16796/7-SS	Hinges, Stainless	85.00 pr
91A-16796-HK	Hinge bolts	7.50 ea
78-16746/7	Hinge Pads, rubber	10.00 pr
78-16782	Props (ratchet type)	not.avbl
01A-16782-MS	Prop shoulder screws, plain	7.50 pr
01A-16782-MSS	Prop shoulder screw, stainless	12.50 pr



### Hood Lacing and Hood Rubber Bumpers

78-16740-S	Hood lacing, rubber, w/screws,	10.00 ea
78-16761	Hood rubber bumper set	25.00 set

### Front Fenders

Fiberglass



RFF37P	RH Front fender	625.00 ea
LFF37P	LH Front fender	625.00 ea
RFI37P	RH inner fender	225.00 ea
LFI37P	LH inner fender	225.00 ea

\* Parts with price listed as "not.avbl" are not known to be available at this time, but are listed for reference.

## 1937 Passenger Grille, Hood, Fenders and Running Boards, cont

### Coupe & Convertible Rear Fenders

Fiberglass

<b>Right:</b>		
RRF37C	475.00	ea
<b>Left:</b>		
LRF37C	475.00	ea



### Slantback Sedan Rear Fenders

Fiberglass

<b>Right:</b>		
RRF37SS	475.00	ea
<b>Left:</b>		
LRF37SS	475.00	ea



### Humpback Sedan Rear Fenders

Fiberglass

<b>Right:</b>		
RRF37TS	475.00	ea
<b>Left:</b>		
LRF37TS	475.00	ea



### Sedan Delivery & Station Wagon Rear Fenders

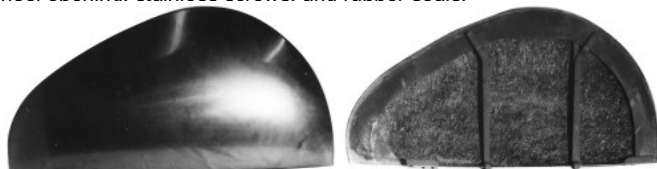
Fiberglass

<b>Right:</b>		
RRF3539SD	475.00	ea
<b>Left:</b>		
LRF3539SD	475.00	ea



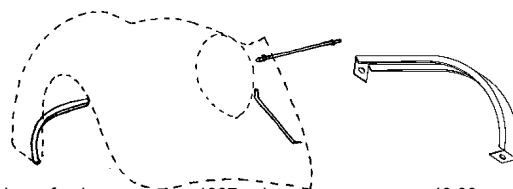
### Teardrop Fender Skirts, Fiberglass

Excellent fiberglass reproductions of the aftermarket bubbled fender skirts that were so popular in the '50's. Includes locking arms to latch to the top of the fender, clamps to the bottom of the skirts to the front and rear of the wheel opening. stainless screws. and rubber seals.



FST3740F Fender Skirts, fiberglass 700.00 pr

### Fender Brackets

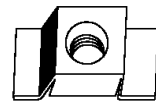


78-8232-B	Inner fender cross stay, 1937 only	40.00	ea
48-16067-R	RH Inner fender to frame brace	10.00	ea
48-16067-L	LH Inner fender to frame brace	10.00	ea
78-16094	Front fender skirt brace	30.00	ea
78-16391	Rear fender skirt brace	30.00	ea

### 5/16-24 Cage Nuts

Welded to body and frame for fender and running board mounting.

AH-3145	Cage nut	1.50	ea
---------	----------	------	----



### Fender Welt

#### Black vinyl, 25 ft. length

48-16070-B	3/16" bead	17.50	ea
48-16070-D	1/4" bead	17.50	ea

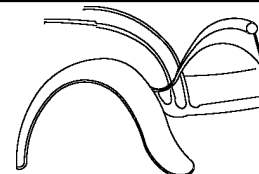
#### Vinyl, clad w/stainless bead, 8 ft.

48-16070-SS	7/32" bead	22.50	ea
-------------	------------	-------	----

#### Vinyl, COLORED, Use part suffix to indicate color

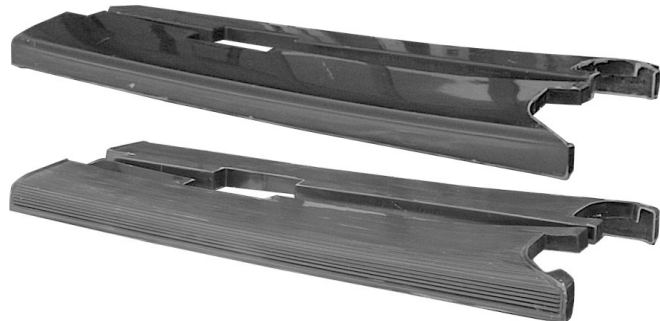
Maroon: -MR, Caramel: -CR, Medium Blue: -BLM, Red: -RD, Dark Brown: -BRD, Dark Green: -GRD, White: -WH, Grey: -GY, Bright Orange: -OR, Yellow: -YL, Bright Red: -RR

48-16070-xx	25 ft length, Specify Color	40.00	ea
-------------	-----------------------------	-------	----



### Running Boards

Fiberglass boards are very strong, over 1/4" thick and have the proper arch for excellent fit and appearance.



#### Fiberglass, smoothie style:

RRB3739PS	RH, smooth running board	450.00	ea
LRB3739PS	LH, smooth running board	450.00	ea

#### Fiberglass, w/molded ribs to simulate original style:

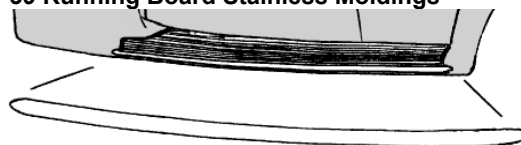
RRB3739P	RH, w/molded ribs	450.00	ea
LRB3739P	LH, w/molded ribs	450.00	ea

#### Steel boards and rubber covers:

Steel boards with vulcanized rubber covers are excellent quality

78-16450/1-BD	Running boards w/molded covers	1175.00	pr
78-16450/1	Molded rubber replacement covers	225.00	pr
48-16455-MB	1935-48 Running board mount bolt	1.00	ea
78-16453-S	Running board mount bolt set, 37-48	12.50	set

### 1937-39 Running Board Stainless Moldings



78-16462-S 1937-38 Passenger, 1939 Standard 95.00 pr

\* Parts with price listed as "not.avbl" are not known to be available at this time, but are listed for reference.